

Doc M

Low Level



High Pan with 6 litre flush to comply with Water Regulations.

- Side entry cistern - internal or external overflow
- Handed for left or right hand lever
- Back rest rail & cushioned pad
- Rangemoor seat with stainless steel locking hinges
- Basin 2 t/h with Spray-mixer tap
- Full set of rails, bottle trap, waste and fixings
- Layout drawings and guidance notes
- Thermostatic Mixing Valve option available

Close Coupled



Box rim Pan, 455mm high, 6 litre flush

- Concealed fixings
- Bottom entry cistern - internal or external overflow
- Handed for left or right hand lever
- Push Button option available
- Rangemoor seat with stainless steel hinges
- Basin 2 t/h with Spray-mixer tap
- Full set of rails, bottle trap, waste and fixings
- Layout drawings and guidance notes
- Thermostatic Mixing Valve option available

Wall Hung



Wall Hung pan - box rim for controlled 6 litre flush

- Height adjustable supporting frame
- Ducted cistern with Spatula lever
- Hinged rail sized to suit pan projection
- Rangemoor seat with stainless steel locking hinges
- Basin 2 t/h with Spray-mixer tap
- Full set of rails, bottle trap, waste and fixings
- Layout drawings and guidance notes
- Thermostatic Mixing Valve option available

Back to wall packs



Back-to-Wall High Pan - box rim - 6 litre flush

- Concealed fixing clamp
- Water resistant Back box
- Exposed or ducted cisterns, with Spatula lever
- Rangemoor seat with stainless steel locking hinges
- Basin 2 t/h with Spray-mixer tap
- Full set of rails, bottle trap, waste and fixings
- Layout drawings and guidance notes
- Thermostatic Mixing Valve option available

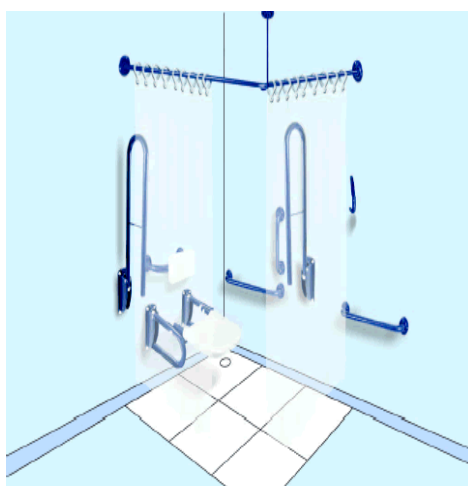
Sani Flow packs



• Sanicompact - is an all-in-one unit, with the macerator built into the toilet pan. The Sanicompact has a height of 465mm and would need a plinth to fully satisfy Document M requirements, but would provide a stylish solution in residential premises. The Sanicompact is only suitable for normal waste and should only be fitted in monitored environments. It is not designed to dispose of abnormal objects and should not be used in uncontrolled locations.

• The Sanibest is a separate macerator box and can be fitted to Low Level and Close Coupled Document M packs, with minimal installation problems. It is designed to cope with the rigours of commercial applications, and can safely be fitted in public facilities. With the use of flexible soil connectors it can also be utilised on Back to Wall and Wall Hung packs.

Docm Shower Pack



Shower Area Doc M Pack

2 Rail Pack 760 includes:

- 2 x 760mm Double Arms
- 1 x 150 x 400 x 150mm Backrest
- 1 x Waterproof Cushion
- 1x Seat (650 length)

Stainless Steel

White Polyester	83410
-----------------	-------

Coloured Polyester	83420
--------------------	-------

1 x 1200 x 1200mm Shower Rail

- 1 x Ceiling Stay
- 2 x 1830 x 1830mm Curtain
- 2 x 10 pack Curtain hooks

Optional Accessories

- 1 x Towel Rail
- 2 x Clothes Hooks